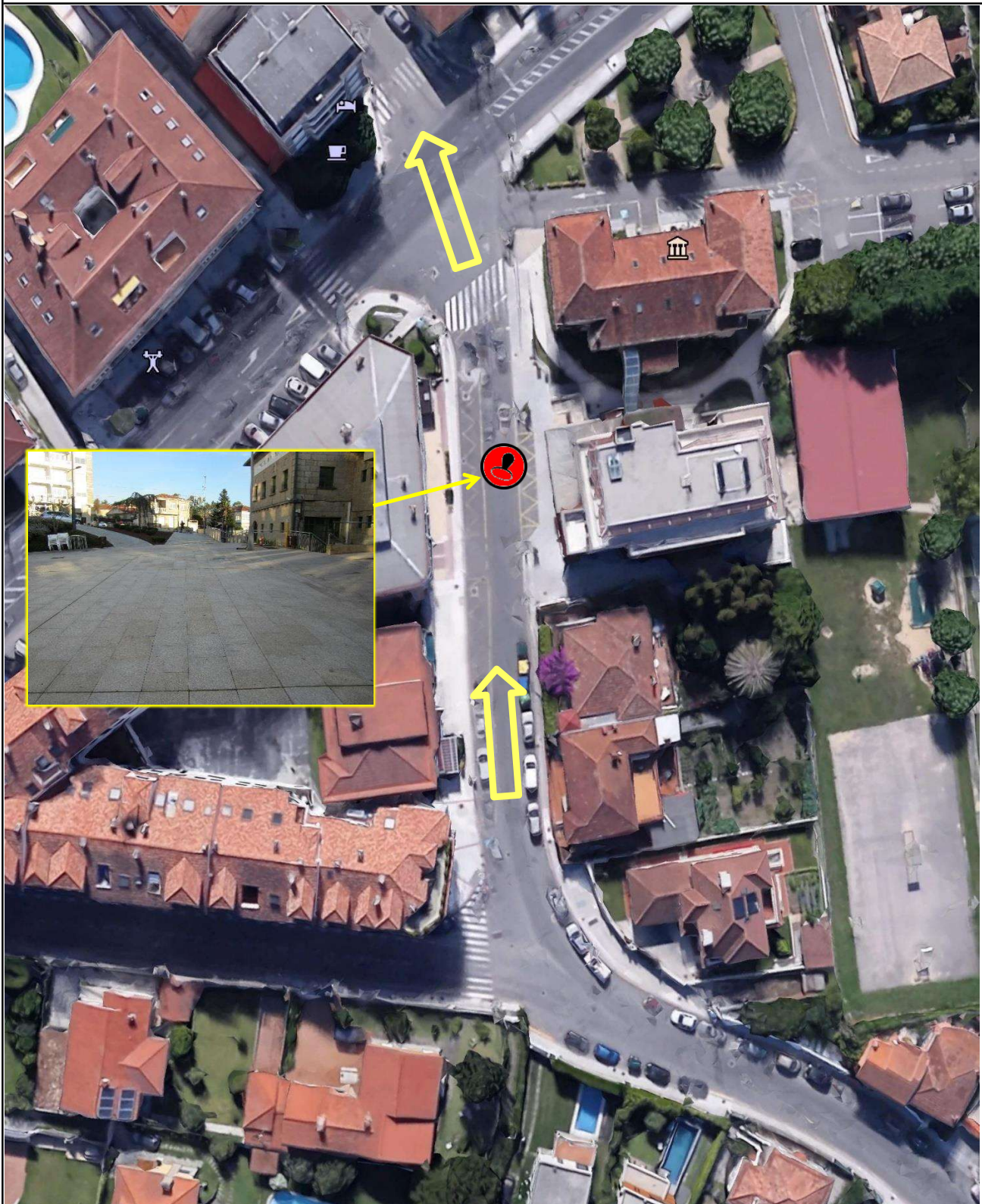




### CONTROL DE PASO NIGRAN

AVENIDA DE CASTELAO 42° 8'30.54"N 8°48'24.37"W

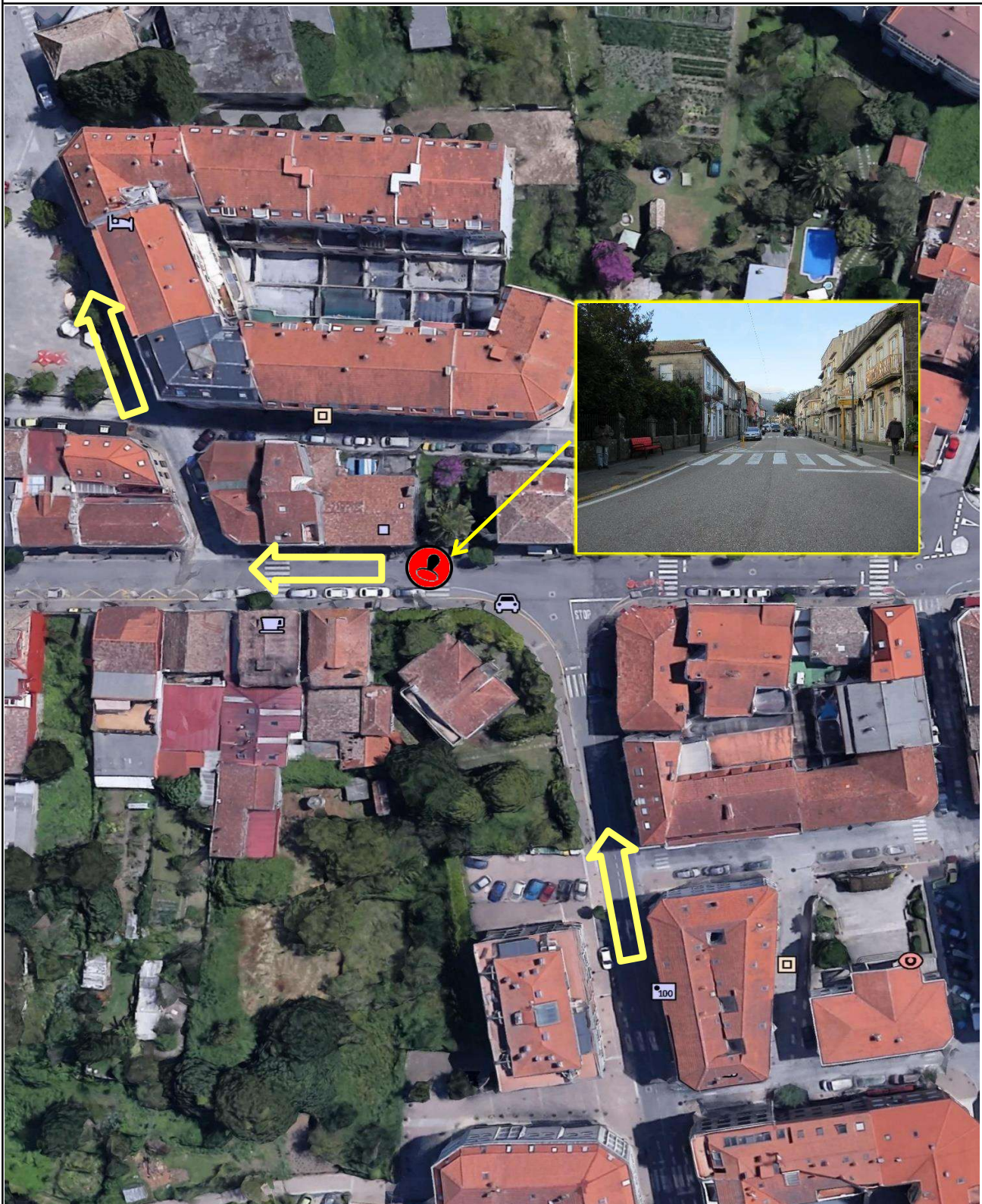


ROAD BOOK SEGURIDAD



### CONTROL DE PASO GONDOMAR

CALLE EDUARDO IGLESIAS 42° 6'41.98"N 8°45'40.20"W



ROAD BOOK SEGURIDAD



CONTROL DE PASO SALCEDA

PLAZA DEL AYUNTAMIENTO 42° 6'6.73"N 8°33'30.46"W



ROAD BOOK SEGURIDAD